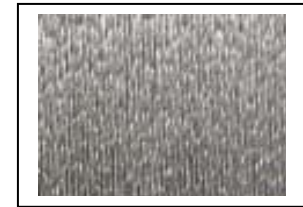




3x2-Galvanized Tapes



1000 Quinn Ave. Pocomoke City, MD 21851
 Voice: 410-957-3669 Fax: 410-957-3424
www.hardwirellc.com

The 3x2-G Hardwire® is a high carbon steel cord with a micro-fine galvanized coating. The 3X2 wire cord is made by twisting 5 individual wires together - 3 straight filaments wrapped by 2 filaments at a high twist angle. The result is an easy to handle cord that combines great engineering values with excellent economics. If your application requires corrosion resistance then 3x2-G is the correct choice.

Characteristics:

- Excellent mix of engineering properties - Up to 8 KIPS/inch.
- Great stiffness, instant wet-ability, and excellent conformability.
- Works in all resins.
- Asymmetric shape acts like a screw and gives great mechanical bonding characteristics.
- Excellent fatigue properties in tension and in high-flex situations.
- Great choice for extrusion and pultrusion applications.
- Excellent corrosion resistance in exterior applications.

Single Roving (Cord) Properties							
Description	Filament Diameters (in)	Cord Dia. (in)	Break (N)	Break (lbs)	Break (kips)	Strain To Failure	Length Per Lb. (ft)
3x2-G	All filaments are .044	0.037	1580	355	0.3550	2.10%	347.6

Description				Tape Properties				Typical Composite Properties			
Density	Hardwire Item Number	Cord Type	Standard Cord Coatings	Tape Density (wire/in)	Tape Weight (lbs/ft ²)	Tensile Load (Kips/in)	Tape Thickness (T) (in)	Laminate Density (lbs/ft ³)	Laminate Thickness (T) (in)	Sheet Stress (ksi)	Effective Modulus (msi)
Low	3X2-4-12-G	3x2-G	Galvanized	4	0.14	1.42	0.062	85.4	0.062	22.90	2.10
Medium	3X2-12-12-G	3x2-G	Galvanized	12	0.41	4.26	0.062	132.2	0.062	68.70	5.27
High	3X2-20-12-G	3x2-G	Galvanized	20	0.69	7.10	0.062	179.0	0.062	114.5	8.44

Legal Disclaimer: When properly incorporated into reinforced plastics and cements, Hardwire® products will normally produce properties similar to those shown in the applicable product data sheets, typical of well-made plastic laminates or cementitious composites. However, Hardwire LLC cannot predict or warrant the actual performance of materials that incorporate Hardwire® products due to the multitude of resin choices, manufacturing processes, potential end uses, and other variables not under Hardwire LLC's control. Results may therefore vary. It is the customer's sole responsibility to validate these values through their own manufacturing and testing processes.